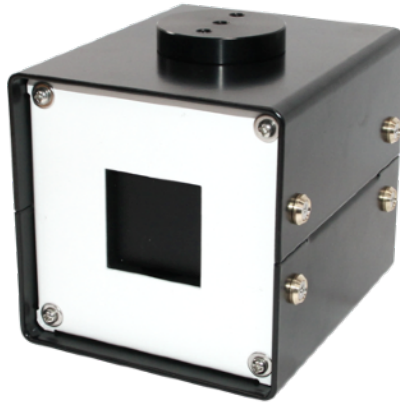




BR-M60



General

Ambient Temperature	0°C to 45°C
Dimensions (D*W*H)	130 × 110 × 110 mm
Weight	<1.1 kg
Mounting hole	Φ 30mm , 1/4 20UNC

Electrical

Temperature sensor	Pt100
Controller	PID
Power supply	110V/220V

Measurement Specifications

Temperature Range	[Tamb + 5°C] ~ 60°C (default 40°C)
Accuracy	± 0.2°C
Temperature resolution	0.01°C
Aperture size	40mm x 40mm
Emissivity	0.96 ±0.01
Warm up time	10°C/15 min
Temperature stabilization time	±0.05°C/10 min
Interface	RS485

Highlights

- Temperature ranges from [Tamb + 5°C] ~ 60°C
- Compact and rugged design
- Perfect for calibrating and testing infrared sensors

Package Content

- 1) BR-M60 blackbody calibration source
- 2) AC/DC adapter
- 3) USB to RS485 converter



Specifications are subject to change without notice
BR-M60-E202011-A

SENTEST Instruments Corporation Ltd.
6F-1, No.75, Section 3, Bade Road, Taipei(105), Taiwan
Tel : +886-2-2579-5079, Fax : +886-2-2579-5297
www.sentest.com